

# Local Planning Panel

13 August 2025

# Application details

Address: 251-255 Oxford Street, Paddington

Application: D/2025/411

Applicant: EARTH VISUAL & PHYSICAL INCORPORATED

Owner: Council of the City of Sydney

# Proposal

- use of Western Chamber of Paddington Reservoir, Walter Read Reserve and John Thompson Reserve
- for a temporary event associated with the City of Sydney Art & About Program
- features a 4m tall inflatable puppet
- 30-minute performances, 3 per night between 5.00pm – 8.00pm
- Thursdays, Fridays and Saturdays
- between 4 September - 20 September 2025
- A total of 27 performances

# Recommendation

Approval subject to conditions

# Site





# Reason reported to LPP

The application is reported to the LPP for determination as:

- It is a contentious development, with the receipt of 25 or more unique submissions by way of objection
- Council is the landowner, and the application proposes a temporary event

# Notification



- exhibition period from 27 May to 10 July 2025
- 208 owners and occupiers were notified
- 37 submissions received:
  - 32 objections
  - 5 in support

# Submissions

- noise
- lighting
- privacy
- heritage impact
- waste management
- toilet amenities
- crowd management
- anti-social behaviour
- parking and transport
- site capacity
- site suitability
- turf management
- use of public land
- consistency with the Walter Read Reserve and Paddington Reservoir Plan of Management and Masterplan

# Submissions



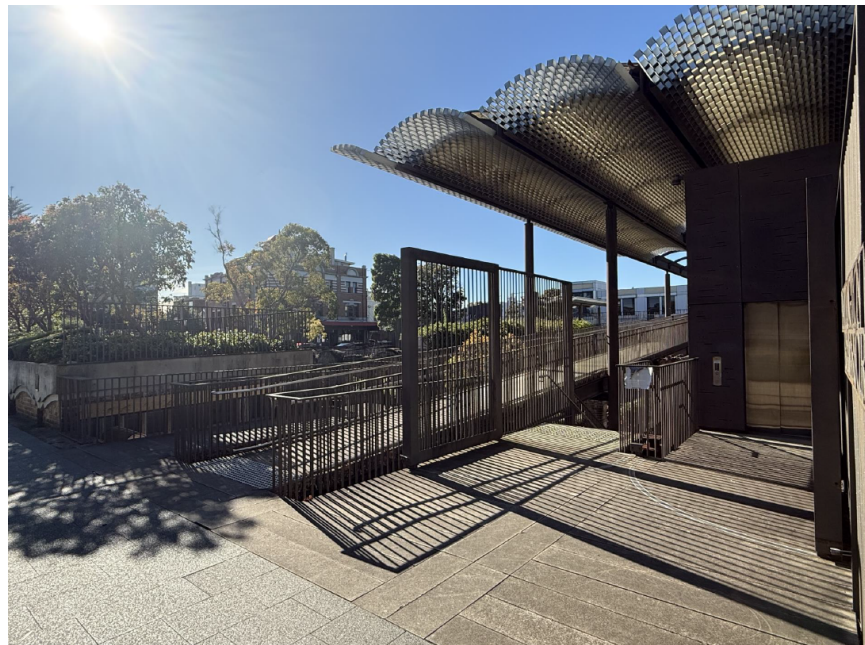
-  subject site
-  submitters

# Site



John Thompson Reserve





stair and lift access to Western Chamber of Paddington Reservoir

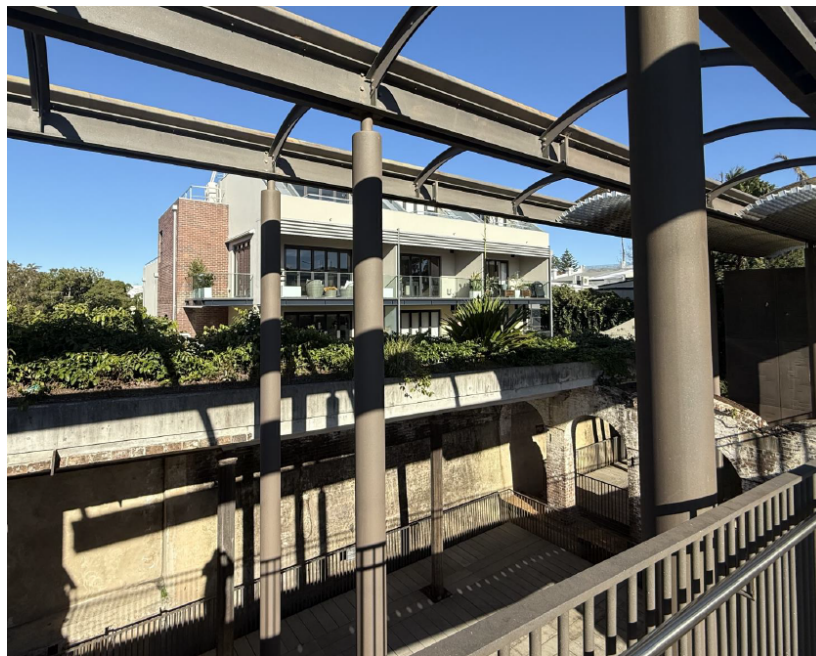


Western Chamber of Paddington Reservoir



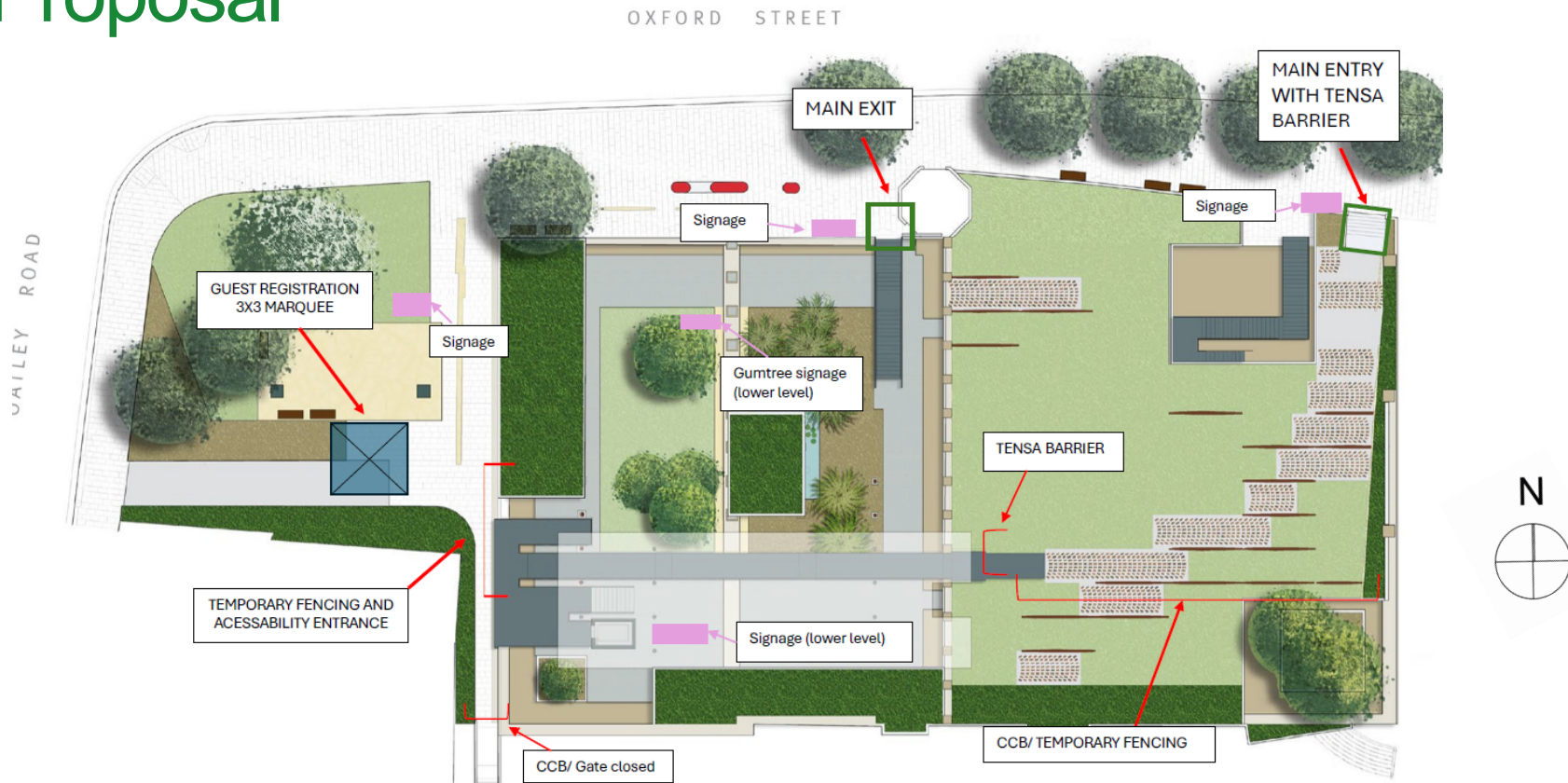


View to Paddington Central from Walter  
Read Reserve

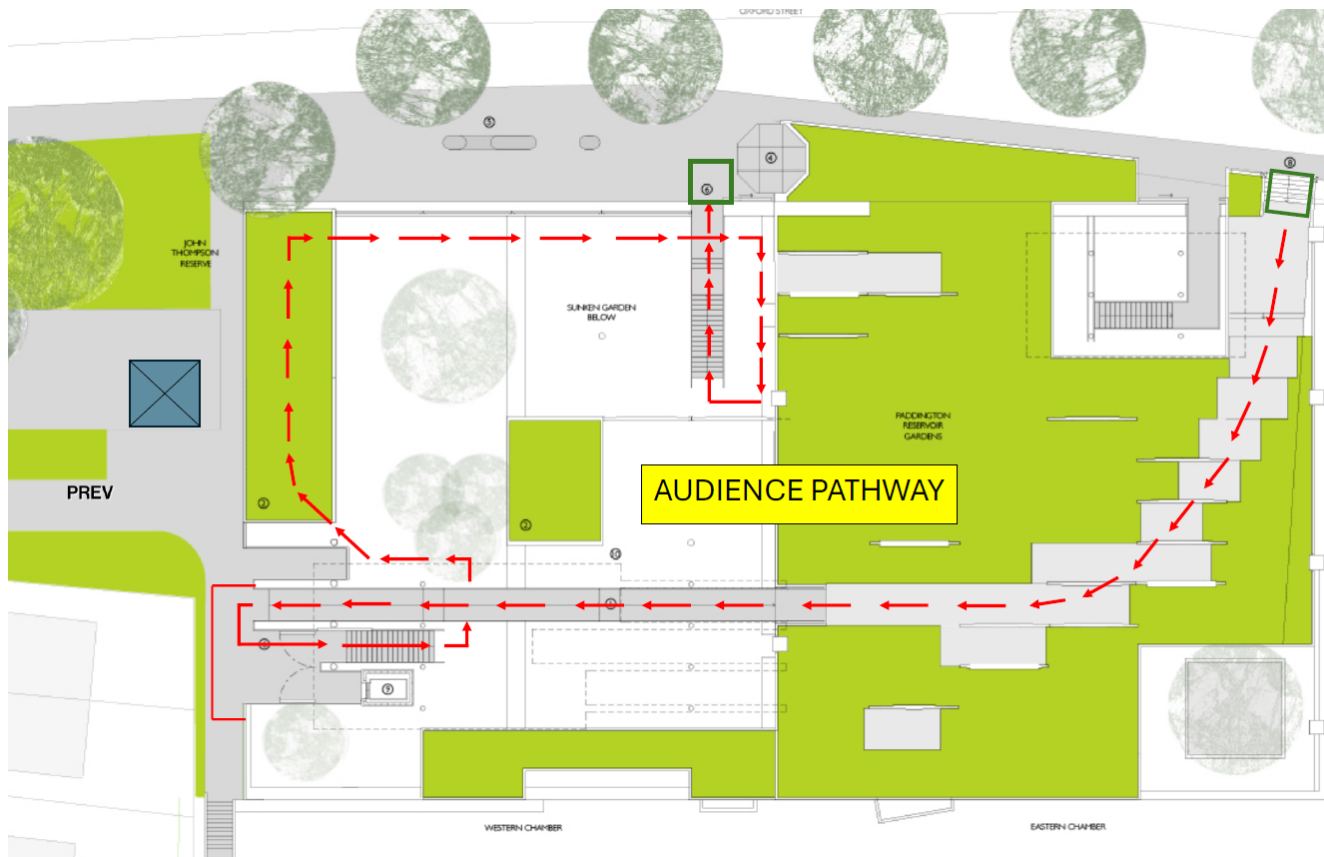


View to Paddington Central from  
footbridge

# Proposal



site plan



audience pathway





lighting plan



puppet

# Compliance with Heritage Act 1977

	control	proposed	compliance
standard exemption 12 Temporary Structures	<ul style="list-style-type: none"><li>erection of temporary structures</li><li>less than 30 consecutive calendar days</li></ul>	<ul style="list-style-type: none"><li>temporary structures only</li><li>21 days from first bump-in day to final bump-out day</li></ul>	yes

# Walter Read Reserve and Paddington Reservoir Plan of Management and Masterplan 2004

area	permissible activities
Walter Read Reserve	<ul style="list-style-type: none"><li>• community open space</li></ul>
Western Chamber of Paddington Reservoir	<ul style="list-style-type: none"><li>• community open space</li><li>• passive recreation with point-of-sale kiosk</li><li>• music</li><li>• performance venue</li><li>• open air art displays</li></ul>
Eastern Chamber of Paddington Reservoir	<ul style="list-style-type: none"><li>• gallery</li><li>• museum</li><li>• exhibition centre</li><li>• coffee shop/café</li><li>• music venue</li><li>• similar cultural use</li></ul>

# Walter Read Reserve and Paddington Reservoir Plan of Management and Masterplan 2004

	control	proposed	compliance
hours of operation	8am – 10pm	<ul style="list-style-type: none"><li>performances between 5pm and 8pm</li><li>bump-in / bump-out between 9am and 10pm</li></ul>	yes
use of Western Chamber	music performance venue	<ul style="list-style-type: none"><li>amplified music</li><li>theatrical production</li></ul>	yes
capacity of Western Chamber	maximum of 200 persons	maximum of 200 persons (including staff and attendees)	yes

# Issues

- noise
- lighting
- crowd management



# Noise

- amplified music: 2x Bluetooth speakers with maximum decibel output of 75dB
- attendees: maximum 200 persons
- 3 x 30-minute performances between 5pm – 8pm
- Plan of Management provides noise control and crowd management procedures
- condition of consent: noise limit for amplified music

# Lighting

- lighting plan submitted
- LED up-lights located in the sunken garden
- ambient lighting of site features for the theatrical performances
- no lighting located at ground level
- no lighting impact on nearby residential units

# Crowd management

- maximum capacity: 200 persons
- event registration required at site
- Plan of Management provides security and crowd control measures
- City of Sydney event management to engage security
- event manager from City of Sydney will be on-site
- crowd control barriers (temporary fencing)

# Recommendation

Approval subject to conditions